

# How to Check Your English Pronunciation

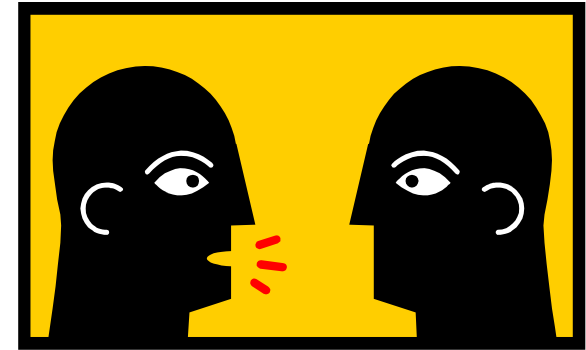
Ralph ROSE

Center for English Language Education (CELESE)  
Faculty of Science and Engineering  
Waseda University



# Introduction

- You want to check your English pronunciation.
- You get a native speaker of English.
- You speak and he/she checks.
- But,
  - It's hard to find a native speaker.
  - Private lessons are expensive.
- So, use a computer!

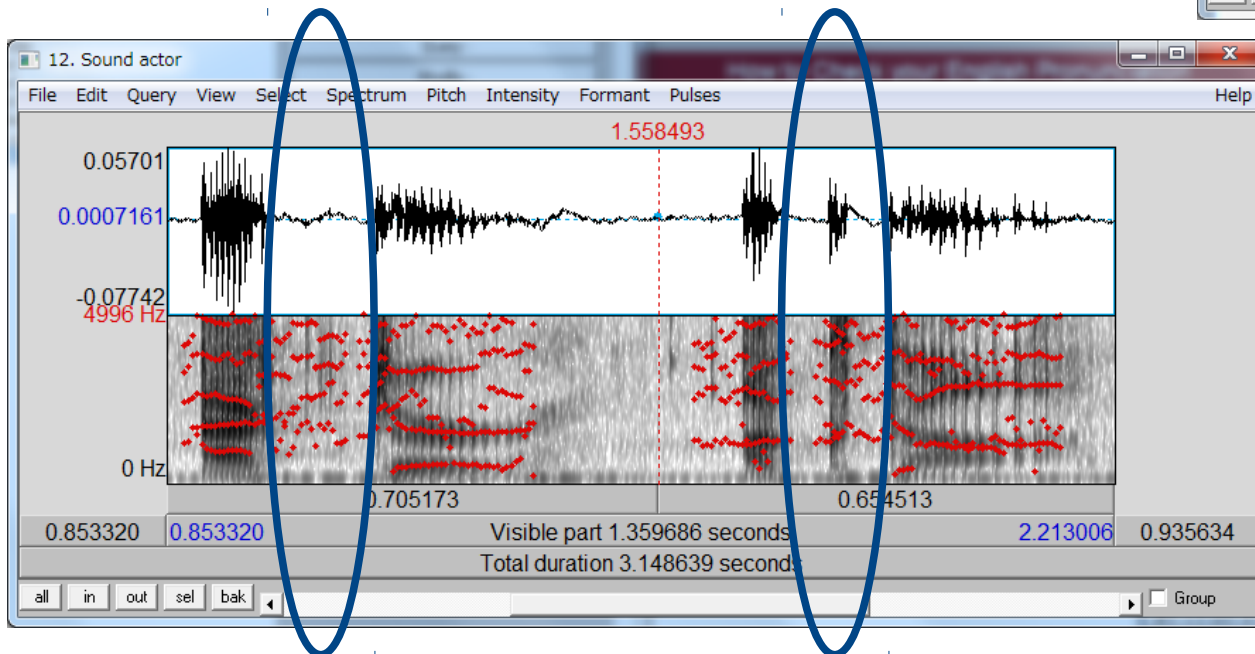
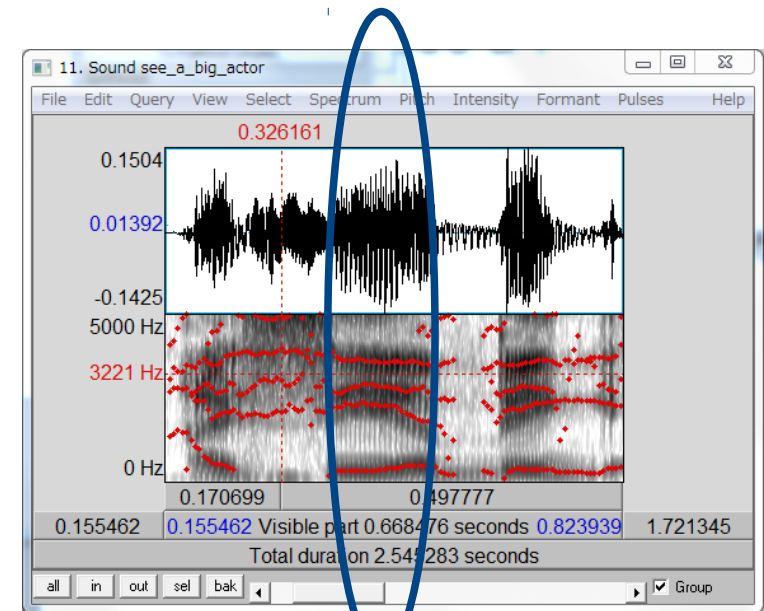


# Praat Quickstart

- Download Praat ([praat.org](http://praat.org))
- Start Praat.
- Close "Praat Picture" window.
- Click "New" → "Record mono Sound..."
- Click "Record".
- Say, "I see a big actor by the food cart."
- Click "Stop".
- Click "Play" to check your recording.
- Input "big cart" in the "Name" box.
- Click "Save to List & Close".

# Praat Quickstart

- Click "View and Edit".
- Listen to "see a".
  - No break between words!
- Listen to "actor" /æktə/.
  - No sound between /k/ and /t/.

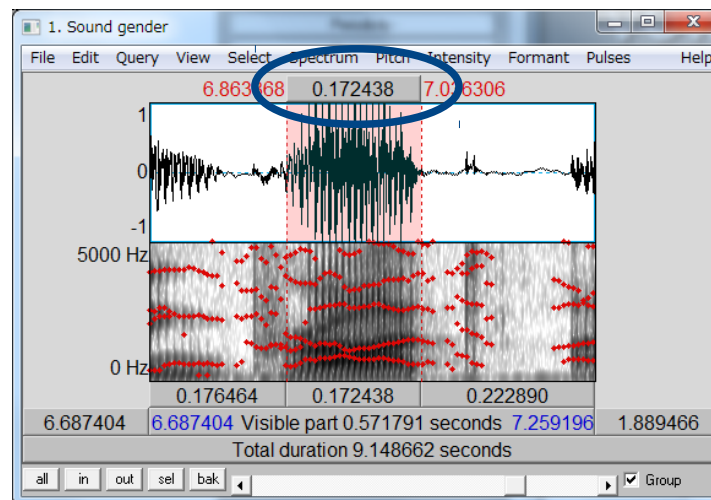


# Vowel Length

- Record the following sentences
  - "I will beat my friend and find a red bead in the game."
  - "John said that he would set his alarm for 6am."
  - "My back hurts today because my bag is so heavy."
  - "The broken saws were fixed with some black sauce at the shop."

# Vowel Length

- Measure the time length of the vowels ( 母音 ):
  - "I will beat my friend and find a red bead in the game."
  - "John said that he would set his alarm for 6am."
  - "My back hurts today because my bag is so heavy."
  - "The broken saws were fixed with some black sauce at the shop."



# Vowel Length

Vowel before voiceless final consonant ( 有声最終子音 )			Vowel before voiced final consonant ( 無声最終子音 )		
word	IPA	length (ms)	word	IPA	length (ms)
beat	b i t	97	bead	b i d	277
set	s ɛ t	71	said	s ɛ d	196
back	b æ k	142	bag	b æ g	304
sauce	s ɔ s	153	saws	s ɔ z	357

My ratio = 1 : 2.4

Typical native = 1 : 2

Yours = 1 : ?

Compare

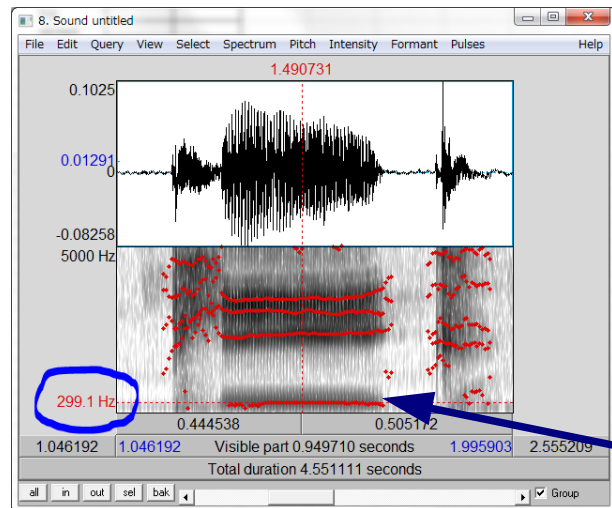
# Vowel Location

- Record the following (strange) short story.
  - "One morning, after I brushed my teeth, I fixed my hair in a special way. But while doing that, I bit my tongue and then my feet started to hurt. I tried to keep from crying, but then my hip broke and I went to the hospital. I picked my favorite doctor. He took a short peek at me, gave me some medicine, and sent me home."



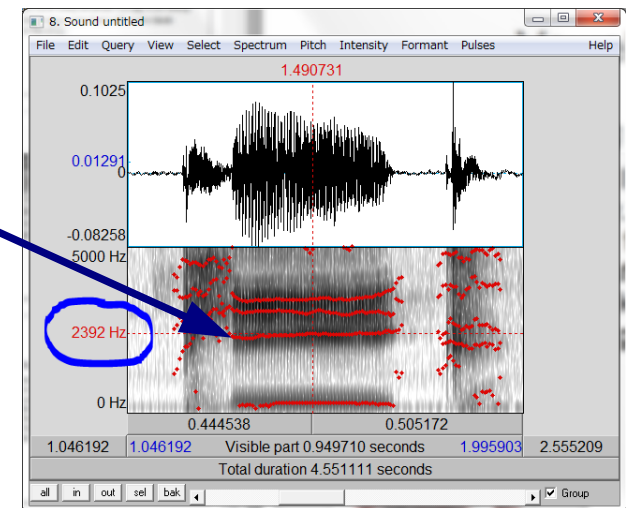
# Vowel Location

- Measure the (F1,F2) values for the vowels:
  - "One morning, after I brushed my teeth, I fixed my hair in a special way. But while doing that, I bit my tongue and then my feet started to hurt. I tried to keep from crying, but then my hip broke and I went to the hospital. I picked my favorite doctor. He took a short peek at me, gave me some medicine, and sent me home."



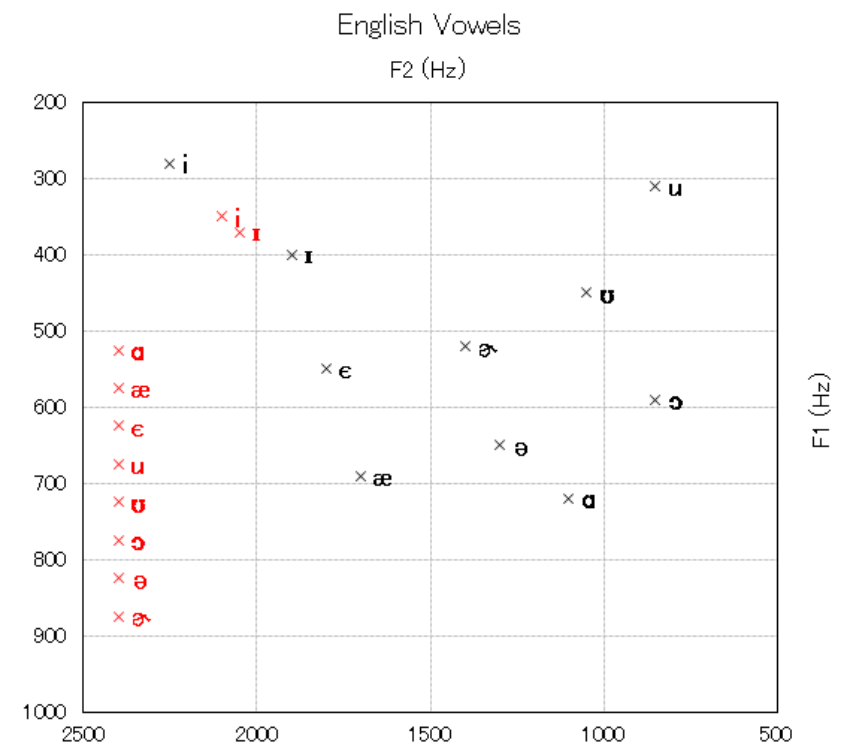
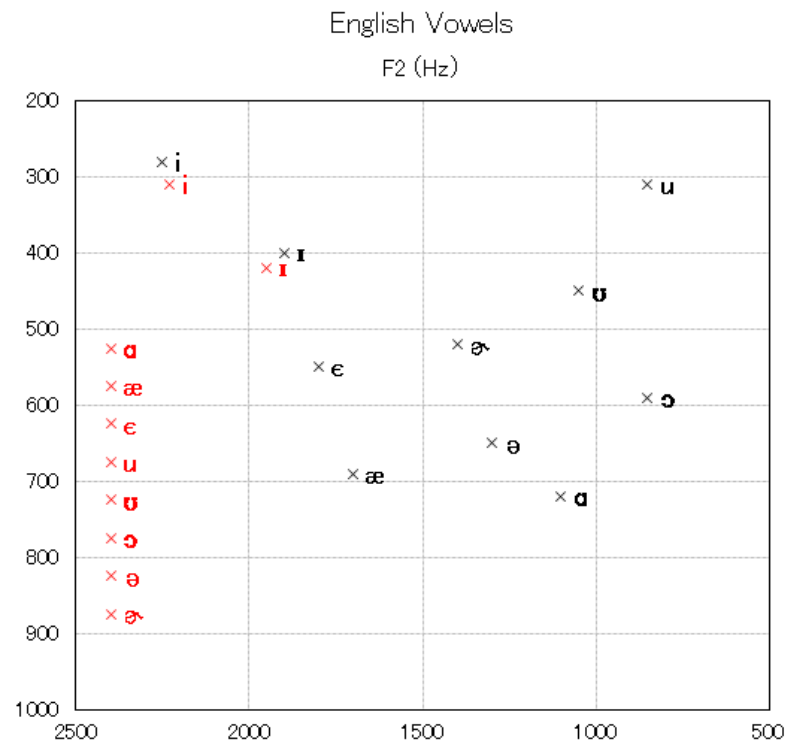
$$500 < F2 < 2500$$

$$200 < F1 < 1000$$



# Vowel Location

- Input the data in the *vowel\_location.xlsx* file.
- How does your graph look?
- What does this mean about your pronunciation?



Try for all vowels: <http://www.roselab.sci.waseda.ac.jp/resources/file/Vowels.xls>

# Just for Fun

- Record the following sentence.
  - "Hello, my name is \_\_\_\_\_. I'm a boy/girl. I wonder what I would sound like if I were a girl/boy. Well, using Praat, I can find out!"
- Click "Convert" → "Change gender..."
  - Pitch floor (Hz): 50
  - Formant shift ratio:
    - Male → Female: 1.1
    - Female → Male: 0.9
  - New pitch median (Hz):
    - Male → Female: 220
    - Female → Male: 120

# Thank you!

- Evaluate your own pronunciation using Praat.
- Enjoy yourself.
- Good luck!

/aɪ.spɪk.ɪŋɡlɪʃ.  
wiə.gʊd.  
prɒnˈʌnsiɛɪʃən/

